



**7th Public Health Palliative Care
International Conference, Bruges**

Isabel Vermote

Thursday 22nd September 2022

Isabel.vermote@fine-arts-museum.be



**musée sur mesure
museum op maat
made to measure**

 **musée oldmastersmuseum**
A stroke of genius.



 **musée fin-de-siècle museum**
Every end is a new beginning



 **musée magritte museum**
From the quotidian to the extraordinary



 **musée wiertz museum**
Exhilaration and glorification

 **musée meunier museum**
The art of labour & the labour of art



14.10.2022 > 12.02.2023
**PICASSO &
ABSTRACTION**
Exhibition



14.10.2022 > 12.02.2023
PRUNE NOURRY
L'Amazone Érogène (Arc)
Installation



14.10.2022 > 12.02.2023
**MIRADAS DE
MUJERES**
Isabelle de Borchgrave X Frida
Kahlo
Exhibition



10.02.2022 > 30.07.2023
**OUR COLLECTION
IN QUESTION**

MADE TO MEASURE

Focus on **accessibility**

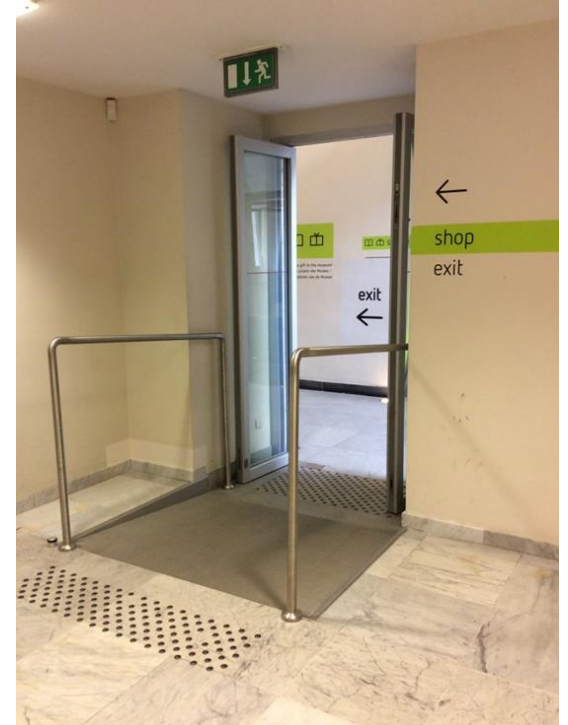
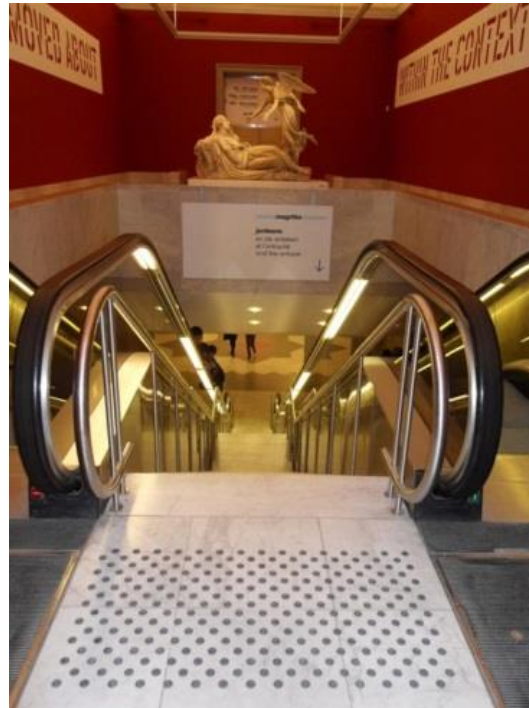
“Everyone must have an equal opportunity to visit the museum in a personal and adapted way, regardless of disability, culture, language or any other restriction..”

Customized programs:

Activities tailored to specific audiences: blind and partially sighted, deaf and hearing impaired, people with mental and/or physical disabilities,...

More than 20 years of experience





Accessibility



Towards a Compassionate Museum

How did it all start?





2017: PILOTPROJECT 'THE CARING POWER OF ART'

A cooperation with the Palliative and Supportive Day Centre TOPAZ (Brussels).





My illness shattered many dreams. I never thought I would be able to visit a Museum again. A wave of happiness came over me when I entered the Museum. I am already dreaming of the next visit!
Johny



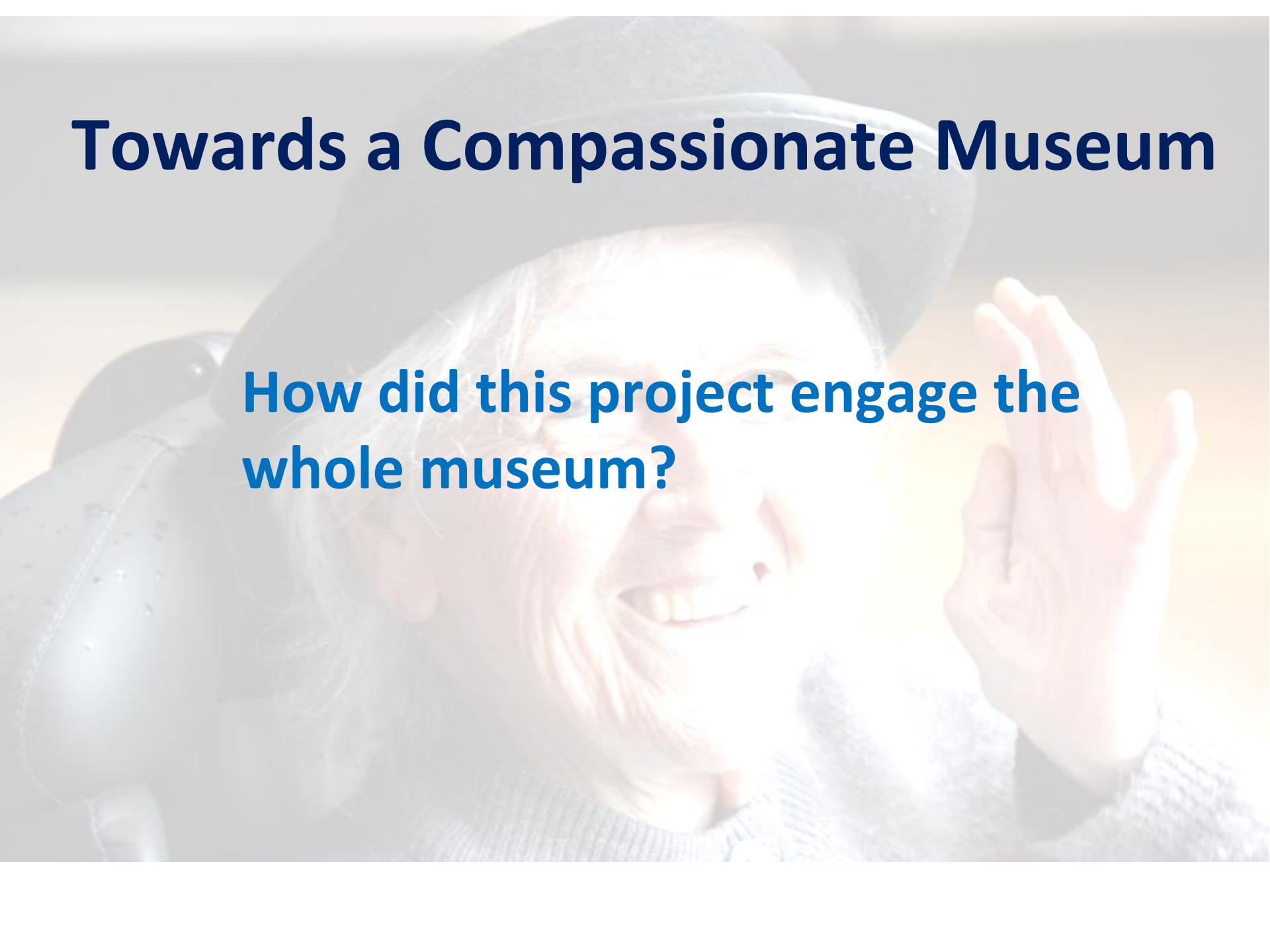
Rik Wouters, *Self-Portrait in a Black Eyepatch*, 1915, Royal Museum of Fine Arts, Antwerp





Towards a Compassionate Museum

How did this project engage the whole museum?



TEAM = Museum Staff, Freelancers, Volunteers, Trainees, Experts,...



Conference: 'Healing Power of Art' (June 2017)



Towards a Compassionate Museum



Sustainability of the project?



Home for Elderly, Rehabilitation Centres, Psychiatric Centres, Dementia, ...





“Extra muros” visits : preparing the visit together



Koninklijke Musea voor Schone Kunsten van België
Musées royaux des Beaux-Arts de Belgique



Art and Dementia



FACTS

Project period
The project starts September 2019 and runs until August 2022.

Who are the project partners?
The project is a partnership of 5 organizations from 4 different European countries:

- Odense Libraries and Citizens Service, Denmark. (leading partner)
- Expertisecentrum Dementie Vlaanderen, Belgium
- Vrije Universiteit Brussel, Belgium
- Healthy Ageing Network Northern Netherlands, Netherlands
- Fundacion Instituto Gerontologico Malia-Ingema, Spain.

The strategic partnership brings the project a wide range of different professional backgrounds and diverse organizational forms, all with the same mission of contributing to a healthier and happier life of people with dementia.



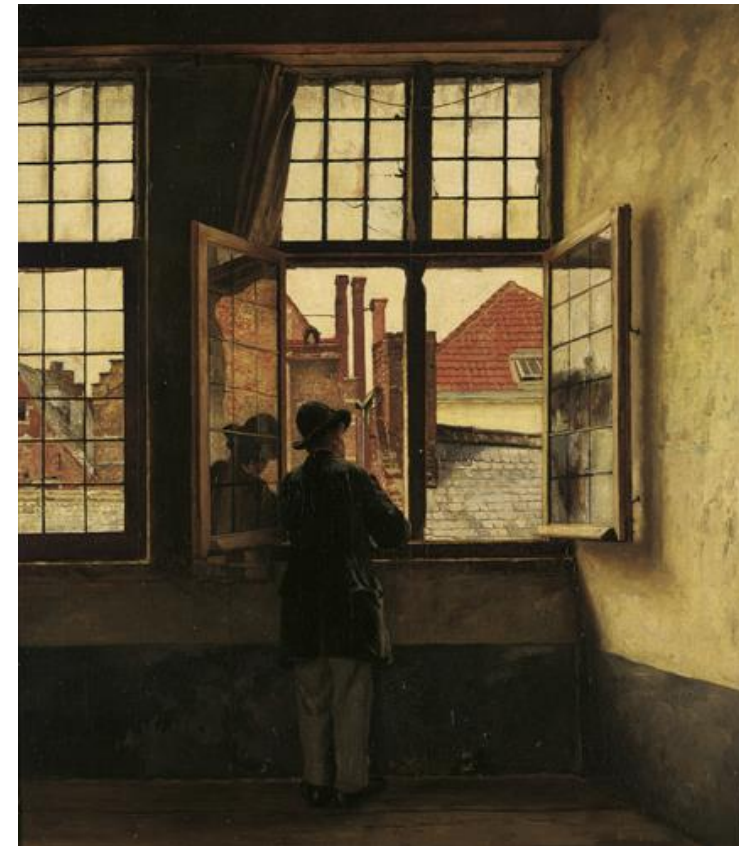
Anna Boch

The shores of Brittany, Royal Museums of Fine Arts of Belgium, ca. 1901.



Anna Boch

The shores of Brittany, Royal Museums of Fine Arts of Belgium, ca. 1901.



Henri De Braekeleer

Man at the Window, Royal Museums of Fine Arts of Belgium, ca 1873-76





Towards a Compassionate Museum



Key Lessons?

*The word ‘curator’
/conservator comes from
Latin and means **to care** [...]
Yet, there is this kind of idea
of **caring not just for objects
but also for people, in
general.** [...] L.S. AUTRY, 2020*





The museum as a place of encounter?

Respect

Love

**Take
Your
time**





“Art is an effort to create, beside the real world, a more humane world.” ~ André Maurois (1885-1967, French writer and historian)